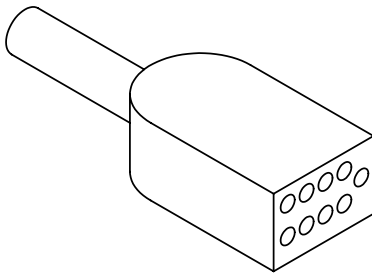
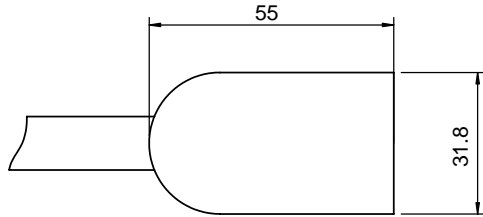
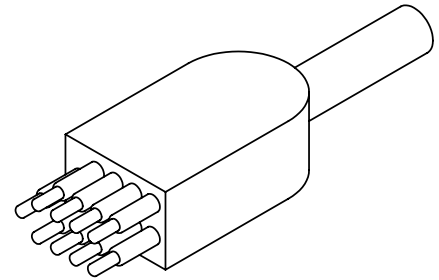
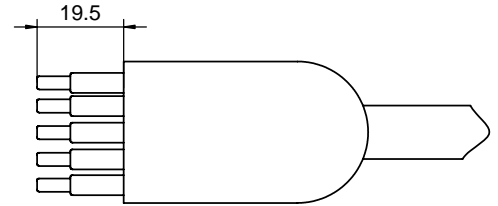




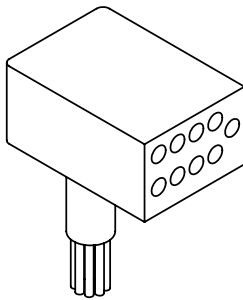
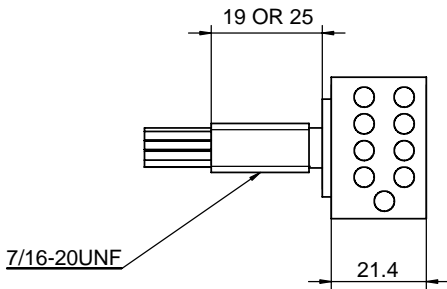
**LP-IL9F**



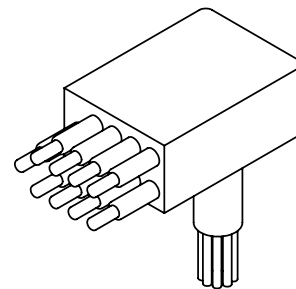
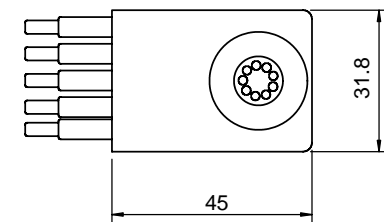
**LP-IL9M**



**LP-BH9F**

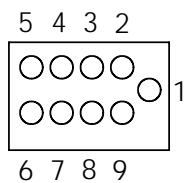


**LP-BH9M**

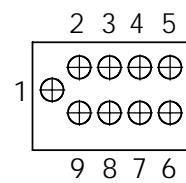


**PIN LAYOUT**

**FEMALE**



**MALE**





**Low Profile (LP) Series 9 pins**

Operation Specifications

Max Current	10A
Max Voltage	600V
Insulation	>250megaohm
Contacts	<0.01 ohm
Matings	>750
Temperature	-5C - +65C
Depth	>600 bar

Material Specifications

Molding	Low Carbon Neoprene
Bulkhead	Brass
Contacts	Gold plated per MIL-G 45204 Type II, Grade D, Class 00
Pin	Phosphor Bronze
Sockets	Beryllium Copper
O-ring	2-014 Nitrile
In-line cable	60cm, AWG 18 (0.82mm <sup>2</sup> ) 16/30 stranding
BH leads	30cm, AWG 18 Teflon, (0.97mm <sup>2</sup> ) 19/30 stranding

Cable Diameter and Current

Color Code

6 cond OD 12.3mm 10A	1-Blk, 2-White, 3-Red, 4-Green, 5-Orange, 6-Blue
7 cond OD 13.0mm 10A	1-Blk, 2-Wht, 3-Red, 4-Grn, 5-Orange, 6-Blue, 7-White/Blk
8 cond OD 13.5mm 10A	8-Red/Black
9 cond OD 15.0mm 10A	9-Green/Black

