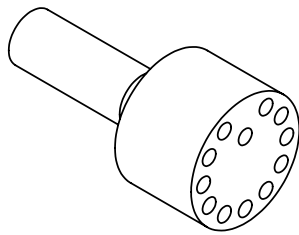
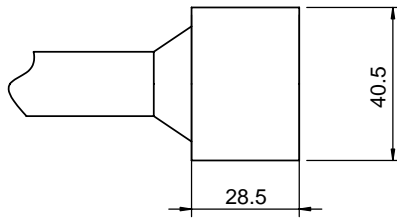
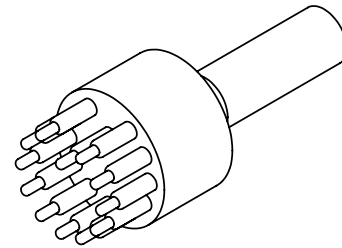
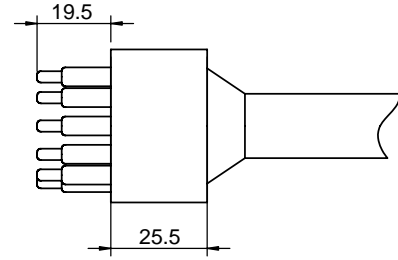




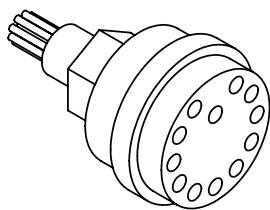
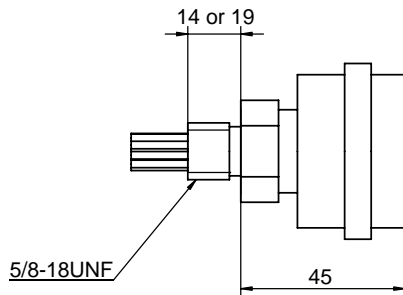
**SC-IL12F**



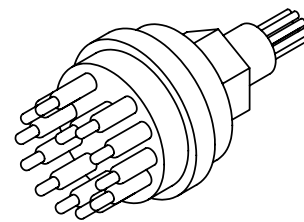
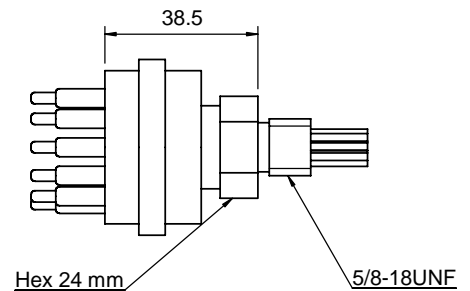
**SC-IL12M**



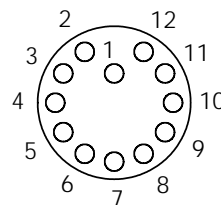
**SC-BH12F**



**SC-BH12M**



**PIN LAYOUT (FEMALE)**





**Standard Circular (SC) Series 12 pins**

Operation Specifications

|             |             |
|-------------|-------------|
| Max Current | 10A         |
| Max Voltage | 600V        |
| Insulation  | >250megaohm |
| Contacts    | <0.01 ohm   |
| Matings     | >750        |
| Temperature | -5C - +65C  |
| Depth       | >600 bar    |

Material Specifications

|                         |   |
|-------------------------|---|
| Molding                 | Low Carbon Neoprene   |
| Bulkhead                | Brass, 316 Stainless, Titanium                              |
| Contacts                | Gold plated per MIL-G 45204 Type II, Grade D, Class 00      |
| Pin                     | Phosphor Bronze   |
| Sockets                 | Beryllium Copper  |
| Location Pin            | 316 Stainless   |
| O-ring                  | 2-017 Nitrile   |
| Locking Sleeve Material | Nylon, glass reinforced                                     |
| Locking Sleeve Type:    | FLS-C, MLS-C  |
| In-line cable           | 60cm, AWG 18 (0.82mm <sup>2</sup> ) 16/30 stranding         |
| BH leads                | 30cm, AWG 18 Teflon, (0.97mm <sup>2</sup> ) 19/30 stranding |

Cable Diameter and Current

12 conductor OD 16mm 10A

Color Code

- 1-Black
- 2-White
- 3-Red
- 4-Green
- 5-Orange
- 6-Blue
- 7-White/Black
- 8-Red/Black
- 9-Green/Black
- 10-Orange/Black
- 11-Blue/Black
- 12 Black/White

