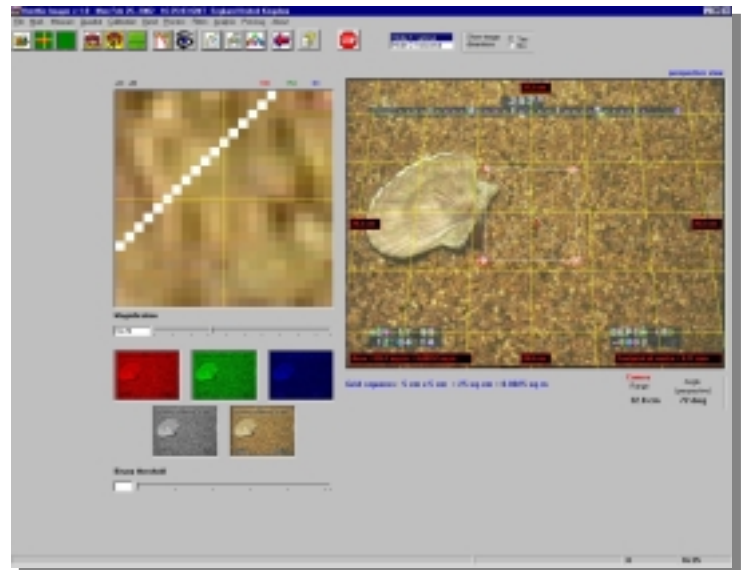


Laser technology used in conjunction with a high quality zoom camera and specially designed imaging software have been combined to provide a highly accurate underwater measuring tool.

Four lasers housed inside the camera provide parallel beams that are visible on the surface under inspection. Two lasers are mounted at a predefined angle and can also be seen on the surface under inspection. These lasers provide reference points which are used to calculate the distance to the reference point.

The ISS-SOFT software package is used to record the image information and carry out measurements and image analysis.

A number of image enhancement tools allow the operator to accurately define the positions of the lasers and enhance the quality of the information logged.



Features

- High quality camera & laser combination
- Distance and scaling measurement
- User friendly PC software

Applications

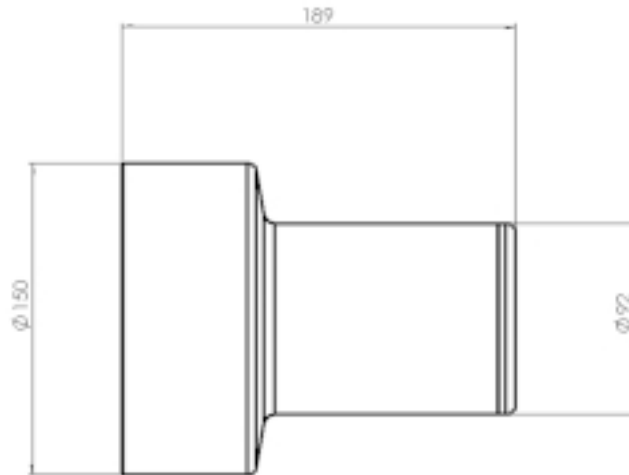
- Damage surveys
- Environmental research
- Oceanographic studies



LASER RADIATION
DO NOT STARE INTO BEAM OR VIEW
DIRECTLY WITH OPTICAL INSTRUMENTS
CLASS 3A LASER PRODUCT

Tritech Image Scaling System

Specification



All measurements in mm

Electronics

Sensor	1/4" Interline Transfer CCD
Resolution	>470TV Lines
Sensitivity	0.1 Lux
Iris (PAL)	Auto
Iris (NTSC)	Auto
Signal to Noise Ratio	>50dB
Video Output	1.0V p-p Composite, 75ohms unbalanced
Scanning System (PAL)	CCIR, 50Hz, 625 lines
Scanning System (NTSC)	RS170, 60Hz, 525 lines
Video Line Drive Capability	1500m with good quality coax
Camera Control	Analogue/RS232C
Zoom	x22 Zoom (Typical useable x14)
Focus	Auto/Manual
Illumination	N.A.
Voltage	12 to 24VDC
Current	500mA nominal

Laser

Rating	Class IIIA
Wave length	640nm
Output	3mW

Optics

Lens	4-88 mm, F1.6
Focal Length	0.2m to infinity
Field of View (Diagonal)	47° (wide), 2.2° (telephoto)

Environmental

Storage Temperature	-10°C to +50°C
Operating Temperature	0°C to +40°C
Depth Rating	1500m (3000m optional)

Mechanical

Housing Material	Hard Anodised Aluminium
Sizes	Refer to drawing
Weight in Air	1.9kg
Weight in Water	0.7kg
Viewport	Acrylic Water Corrected
Connector	Burton

Marketed in conjunction with Qinetiq

All specifications are subject to change in line with Tritech's policy of continual product development.

Ref: ISS Issue 4 May 03



Tritech International Limited
Peregrine Road
Westhill Business Park
Aberdeen AB32 6JL
United Kingdom
Tel : ++ 44 1224 744111
Fax : ++ 441224 741771
Email : sales@tritech.co.uk
<http://www.tritech.co.uk>



SCOTTISH OFFSHORE
ACHIEVEMENT AWARDS



Marketed by: