



# StarFish

## seabed imaging system

### FEATURES:

- THE SMALLEST SIDE SCAN TOWFISH ON THE MARKET
- PIONEERING, INNOVATIVE DESIGN
- EASILY TRANSPORTABLE - FITS IN A SMALL RUCKSACK
- PLUG & PLAY USB INTERFACE TO ANY PC
- EASILY POWERED FROM ALMOST ANY SOURCE
- SIMPLE INTUITIVE SOFTWARE

### APPLICATIONS:

- DIVE CLUBS
- LAW ENFORCEMENT / HOMELAND SECURITY
- SHIPWRECK HUNTING / TREASURE HUNTING
- UNDERWATER RESEARCH / ACADEMIC INSTITUTES
- FISHERIES / ANGLING / SPORT FISHING
- OFFSHORE OIL & GAS INDUSTRY
- UNDERWATER ENGINEERING PROJECTS / SURVEY



StarFish is a revolutionary, high definition, side scan sonar which produces near photo-quality images of the seabed. Built to a unique, innovative design StarFish is currently the smallest side scan towfish on the market.

Since the first seabed imaging sonars were developed, manufacturers have predominantly focused on a cylindrical or torpedo-shaped towfish body. Research into underwater hydrodynamics has shown that the torpedo-shape many associate with side scan sonars may not be the optimum design.

Today we have created a revolutionary, new tow body challenging these old concepts and providing several advantages. The compact design and unique shape dramatically improve the stability of the sonar and with it the quality of the seabed images.

The near photo-quality images produced by StarFish make it an affordable, low-cost side scan sonar compared to many larger commercial side scan systems.

The advanced digital CHIRP acoustic techniques used by StarFish offer better range resolution compared to conventional fixed-frequency side scan sonars.

StarFish is truly 'Plug and Play' connecting to your PC or laptop via a USB Port. It out performs many larger commercial systems, yet the intuitive software makes it very easy to use.

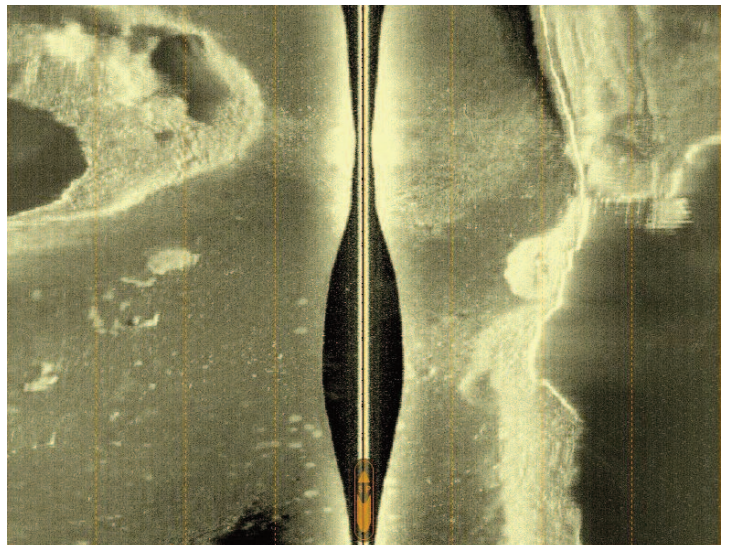


Image of the seabed produced by StarFish

### System Specifications

System Parts		
Sonar		Starfish 450F Sonar Head (Inc. 20m tow cable) Starfish 450 Top-Box (Inc. USB interface cable)
Power Supplies		Universal AC mains to DC power-supply (Inc. international AC adaptor) 2m cigar plug and lead Crocodile-clip to cigar socket adaptor.
Software		Starfish Interface Software
Documentation		User manual
Legislative Compliance	RoHS WEEE EMC	Full compliance to the 2002/95/EC RoHS directive. Full EN50419 compliance TBA

### Sonar Head Specifications

Dimensions		
	Length	380mm (14.96")
	Width	110mm (4.33")
	Height	100mm (3.94")
Weight	Air	Approx 2.0Kg (4.41lb)
	Water	Approx 1.0Kg (2.20lb)
Towing cable	Length	20m (65.6ft)
	Breaking Strain	≥150Kg (330.7lb) Kevlar reinforced
	Construction	Black polyurethane jacketed, with internal Kevlar reinforcing member
Construction		Reinforced black polyurethane rubber
Transducers	Arrangement	Dual fin mounted transducers, with 30° down angle from horizontal.
	Vertical beam-width	60° nominal (@ -3dB point)
	Horizontal beam-width	1.7° nominal (@ -3dB point)
	Operating frequency	450KHz nominal.
	Transmit Source	
	Power Level	TBA

All specifications are subject to change in line with Tritech's policy of continual product development.

Ref: EDS-SID-003.1

**E-MAIL:** info@starfishsonar.com **POST:** StarFish Seabed Imaging System  
**PHONE:** + 44 (0)1224 746979 Tritech International Limited  
**FAX:** + 44 (0)1224 741771 Peregrine Road Westhill  
**WEB:** www.starfishsonar.com Aberdeen AB32 6JL United Kingdom

Marketed by: