

PRO 4 CD 300SE



PRODUCT INFORMATION for COMMERCIAL DIVING

System Specifications

Depth Rating	305 m (1,000 ft)
Total System Weight	54 kgs (120 lbs) in 3 watertight Pelican cases
Submersible Size and Weight	10.6 lbs (4.8 kgs) / 14.2, 11, 8.5 inches (361, 270, 210 mm)
Speed	4.2 knots
Power Supply	100-240 VAC auto switching or 12 V DC with Inverter (Included)

Submersible Robot

Main Camera

Location:	Front - inside the pressure hull
Features:	Wide Dynamic Range Auto mode switching (color/b&w) with real-time controls Backlight compensation More than 20 real-time user controllable settings
Zoom:	Digital 2.5x
Resolution:	High resolution, TV quality
Sensitivity:	Color mode: 0.004 lux Black & White mode: 0.0001 lux
Focus:	variable
Type:	NTSC or PAL
View Angle:	90° horizontal, 140° diagonal <i>underwater optimized wide angle</i>
Tilt:	180 degree, servo control

Second Camera

Location:	Top or Bottom - manually adjustable fixed outside the pressure hull
Features:	Color CCD Camera
Resolution:	High resolution, TV quality
Sensitivity:	Color 0.1 lux
Focus:	Fixed
Type:	NTSC or PAL
Lens:	3.6 mm fixed lens



Lighting

Forward

Type:	LED
Source:	24 emitters
Output:	3,600 lumens (5,760 max)
Color:	6,500 K

Second Camera

Type:	LED
Source:	12 emitters
Output:	1,800 lumens (2,890 max)
Color:	6,500 K

External Auxiliary (Optional)

Type:	LED
Source:	12 emitters
Output:	1,800 lumens
Color:	3,000 K or 10,000 K

Propulsion

Horizontal

Drive:	Direct
Motor:	Brushless
Propellers:	100 mm
Thrusters:	Two

Vertical

Drive:	Geared
Motor:	Brushless
Propeller:	65 mm
Thruster:	One

On-Board Sensors

Navigation:	3-D tilt compensated compass, accelerometer, MEMS gyro
Sonar:	Sonar Ready
Internal:	Leak indicator, Temperature sensor

Accessories and Sensors

- Manipulator Arm
- Ready for Accessories without modifications: Sonar, Lynn, Positioning, Laser Scale, Metal Thickness, Cathodic Probe

Control Console

Comms Protocol:	RS-485	Recording:	Integrated (MPEG, WMV format)
Case:	Rugged, watertight Pelican 1550	Video overlay:	Date, time, depth, heading, user text
Computer:	Notebook Computer (MIL-STD-810D/IP54)	Controller:	Industrial 12 button hand controller
Display:	Two display monitors	Recording:	One button recording (hand controller)
Main:	15 inch	Digital Stills:	One button digital still capture (hand controller)
Secondary:	10.5 inch (included with computer)	Video out:	Digital or analog composite video out



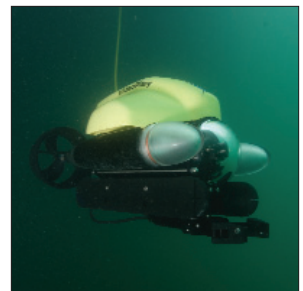
Tether

Type:	Neutral/Negative/Performance Combo	Expansion:	Modular
Length:	75 m Neutral, 40 m Neutral Performance	Diameter:	8mm
Extension:	Negative 75 m	Management:	Extended Tether Deployment System (TDS)
Case:	Waterproof Pelican 1620 with wheels and retractable handle.		



Other Components

- Owners Manual
- Anodized shell
- Integrated skid ballast weight set
- Depth sensor calibration tool
- Spare parts
- Professional tool kit
- Hand compass
- Tether strain relief
- The system fits into three water-tight Pelican cases and is airline checkable
- 12 Volt DC 800 Watt inverter



Warranty

Two year limited warranty covering manufacturing and component defects.
Upon or after warranty expiration this warranty can be renewed annually.